

# ST-B-HD ST-B-HDD

UL94-V0, FDA, RoHS



ST-B-HD and ST-B-HDD are made of polypropylene. They are suitable for use in the pharmaceutical industry. ST-B-HDD is suitable for use in the pharmaceutical industry. X-Ray is suitable for use in the pharmaceutical industry. ST-B-HD and ST-B-HDD are suitable for use in the pharmaceutical industry.



1935/  
2004/  
EG

EU VO.  
10/2011



RoHS  
compliant



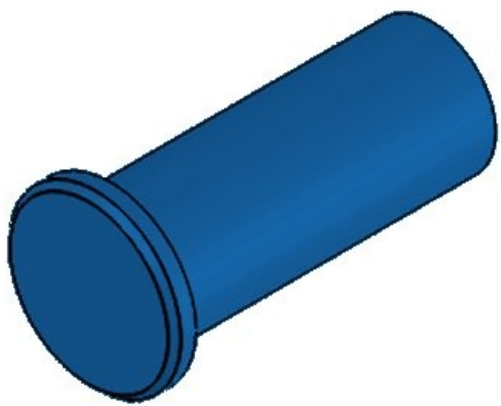
Made in  
Germany

## ST-B-HD ST-B-HDD

- ST-B-HD and ST-B-HDD are made of polypropylene.
- ST-B-HDD is suitable for use in the pharmaceutical industry.
- ST-B-HDD is suitable for use in the pharmaceutical industry.
- ST-B-HD and ST-B-HDD are suitable for use in the pharmaceutical industry.

UL94-V0, FDA, RoHS
-40 C° to 120 C°
ST-B-HD, ST-B-HDD, ST-B-HD, ST-B-HDD

## ST-B-HD ST-B-HDD



EAN	<b>70500</b> <b>4251269323</b> <b>461</b> <b>10</b> <b>16 mm</b> <b>(RAL 5005)</b>
Ø D1	<b>8 mm</b>
Ø D2	<b>6 mm</b>



EAN

**70501**

**4251269323**

**478**

**10**

**16 mm**

**□□(RAL 5005□ □**

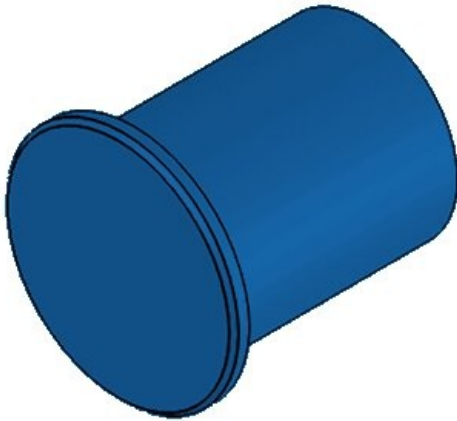
**□)**

□□ D1

**12 mm**

□□ D2

**10 mm**



EAN

**70502**

**4251269323**

**485**

**10**

**16 mm**

**□□(RAL 5005□ □**

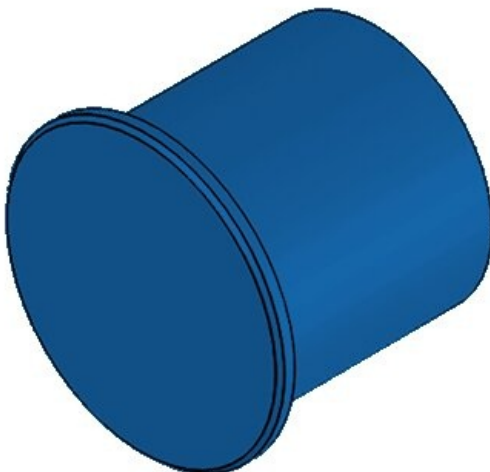
**□)**

□□ D1

**15 mm**

□□ D2

**12 mm**



EAN

**70503**

**4251269323**

**492**

**10**

**16 mm**

**□□(RAL 5005□ □**

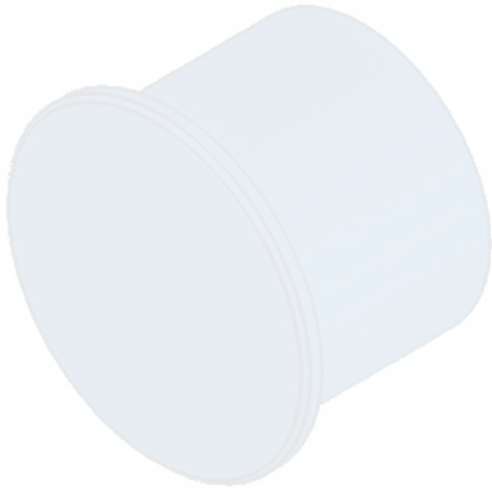
**□)**

□□ D1

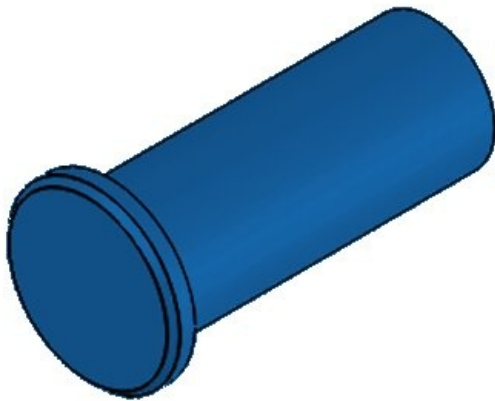
**19 mm**

□□ D2

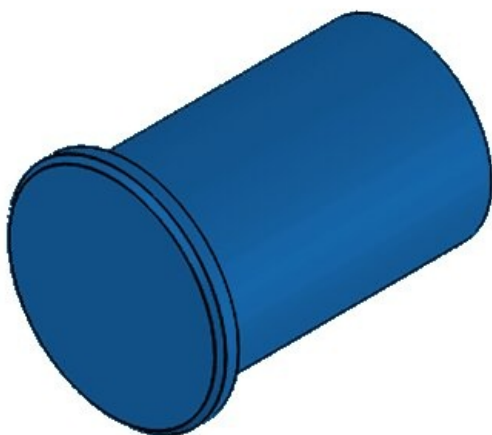
**16 mm**



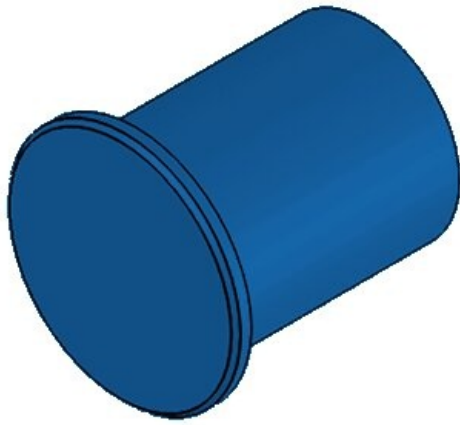
EAN **70504**  
**4251269323**  
**508**  
**10**  
**21 mm**  
**□□(RAL 5005□ □**  
**□)**  
□□ D1 **25 mm**  
□□ D2 **22 mm**



EAN **70620**  
**4251269323**  
**515**  
**10**  
**16 mm**  
**□□(RAL 5005□ □**  
**□)**  
□□ D1 **8 mm**  
□□ D2 **6 mm**



EAN **70621**  
**4251269323**  
**522**  
**10**  
**16 mm**  
**□□(RAL 5005□ □**  
**□)**  
□□ D1 **12 mm**  
□□ D2 **10 mm**



EAN

**70622**

**4251269323**

**539**

**10**

**16 mm**

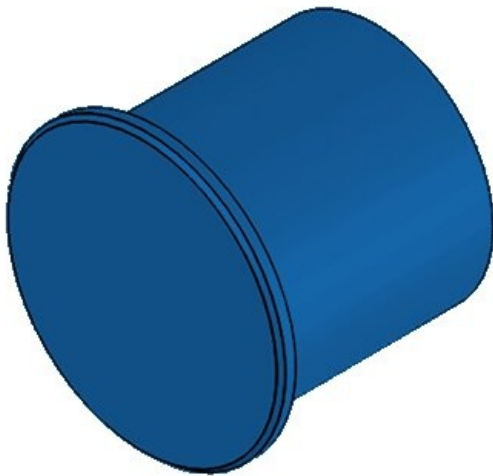
**□□(RAL 5005□ □  
□)**

□□ D1

**15 mm**

□□ D2

**12 mm**



EAN

**70623**

**4251269323**

**546**

**10**

**16 mm**

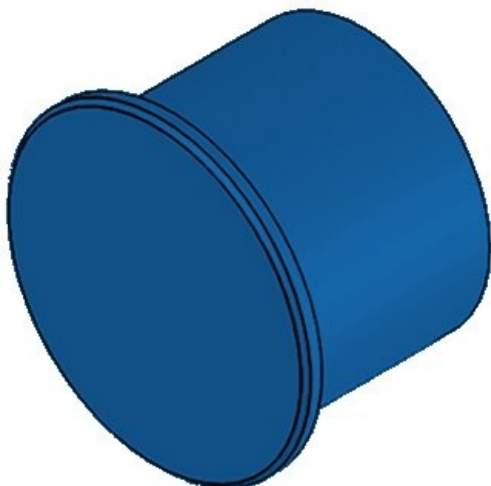
**□□(RAL 5005□ □  
□)**

□□ D1

**19 mm**

□□ D2

**16 mm**



EAN

**70624**

**4251269323**

**553**

**10**

**21 mm**

**□□(RAL 5005□ □  
□)**

□□ D1

**25 mm**

□□ D2

**22 mm**

