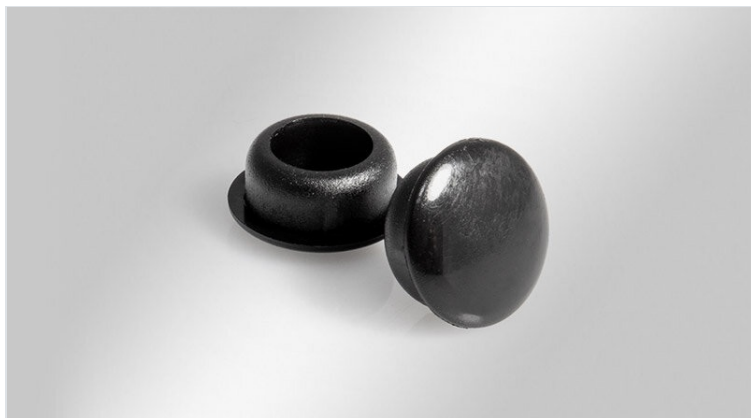


Cover plugs

for cable entry frames & plates

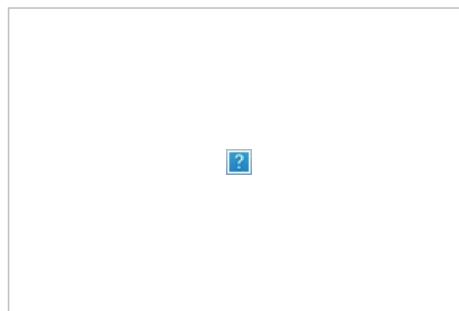


RoHS
compliant

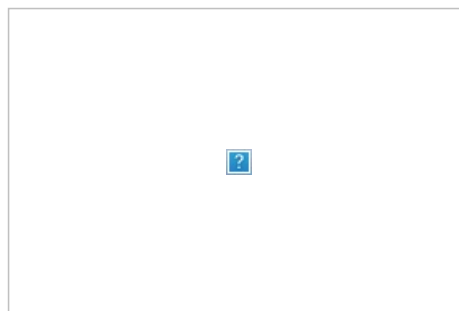
The openings at the fastening points of the cable entry frames can be closed with the cover plugs.

There are two versions: One version to cover the openings when using threaded bushings, one to cover the screws. The cover plugs can be used with the products of the KEL series.

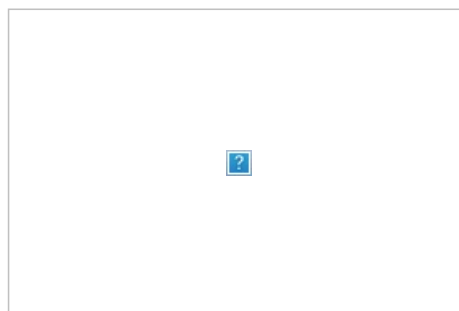
The cover plugs can also be used with the products of the KEL-DPZ series. They are available in black and grey.



When fastening from the rear using a threaded bushing, an opening is created at the front at the fastening points. These can be closed with the **cover plugs A** in black (Order No. 99142).



When fastening from the front by means of screws, the openings at the screw heads can be closed with the **cover plugs B** in black (order no. 99200) or **cover plugs C** in grey (order no. 99201). The cover plugs can only be used for M5 DIN 912 screws.



When fastening from the front by means of screws, the openings at the screw heads can be closed with the **cover plugs B** in black (order no. 99200) or **cover plugs C** in grey (order no. 99201). The cover plugs can only be used for M5 DIN 912 screws.

Specifications

Material	Polyethylene
Operating temperature	0 C° to 70 C°
Properties	higher chemical resistance

Product types & sizes

Advantages & benefits

- Simple closing of the openings at the fastening points of the KEL / KEL-DPZ
- Smooth finish on the frame surface
- No dirt recesses

Cover plug A



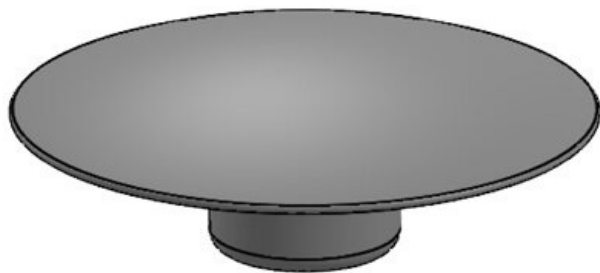
Part No. **99142**
EAN
Package quantity **100**
Height **4 mm**
Colour **black**
Cover plug type **A**
Suitable for cable entry systems: **KEL-ER / KEL-U / KEL / KEL-QUICK / KEL 183 / KEL-FL**

Cover plug B



Part No. **99200**
EAN **4251269324 208**
Package quantity **40**
Height **3 mm**
Colour **black**
Cover plug type **B**
Suitable for cable entry systems: **KEL-ER / KEL-U / KEL / KEL-QUICK / KEL 183 / KEL-FL / KEL-DPZ**

Cover plug C



Part No. **99201**
EAN **4251269324 215**
Package quantity **40**
Height **3 mm**
Colour **grey (similar RAL 7035)**
Cover plug type **C**
Suitable for cable entry systems: **KEL-DPZ**

