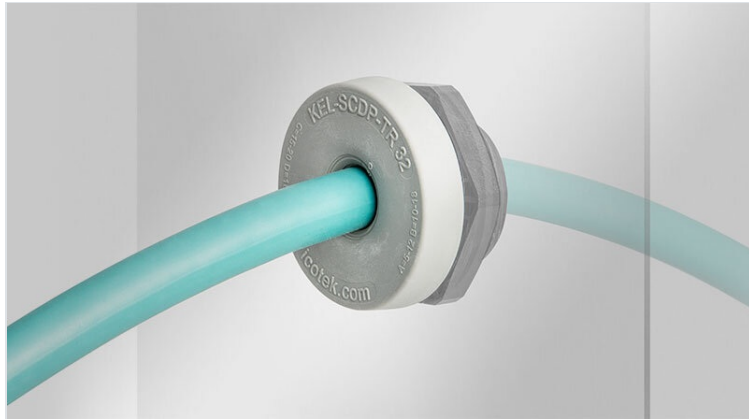


# KEL-SCDP-TR multi-range cable entry grommets

with metric threads M25 - M63, for single cables with diameters up to 52 mm / IP65



With the KEL-SCDP-TR cable entry grommet, single unterminated cables, hoses and conduits can be routed and sealed at a rating of IP65. Its unique advantage is the large sealing range.

The single circular membrane can be peeled away to accommodate the specific diameter of the cable or hose. For this purpose, only a small hole between the rings needs to be pierced. Then the corresponding ring can be removed. The peeled-off area is always round, ensuring a secure seal around cable/hose.

**Peeling of circular membranes:** Cable diameter less 15-25%. The corresponding diameters are marked on the cable entry.

The KEL-SCDP-TR grommets have a thread to fit in metric cut-outs from M25 to M63. Thus cut-outs for metric cable glands can be used. Hexagonal locknuts are included in the delivery.

IP54

IP55

IP64

IP65

ECOLAB  
certified



RoHS  
compliant

REACH  
COMPLIANCE

Made in  
Germany

## Specifications

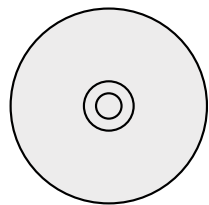
<b>IP rating (EN 60529)</b>	IP54, IP55, IP64, IP65
<b>Material</b>	Elastomer Base frame: Polyamide
<b>Operating temperature</b>	-40 C° to 100 C°
<b>Properties</b>	silicone free, halogen free
<b>Mounting options</b>	Fasten with locknut

## Advantages & benefits

- Perfect edge protection and sealing (IP65)
- Circular membranes can be peeled off easily
- Quick assembly without tools
- Suitable for metric cut-outs
- Hexagonal locknut included in the delivery

## Product types & sizes

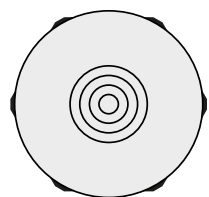
### KEL-SCDP-TR 25



Part No.	<b>44070</b>
EAN	<b>85472000</b>
Package quantity	<b>10</b>
For max. no. of cables	<b>1</b>
Max. cable diameter	<b>17 mm</b>
Height	<b>22 mm</b>
Mounting height	<b>8 mm</b>

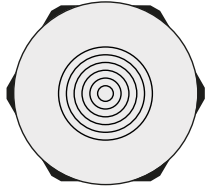
External diameter	<b>39 mm</b>
Cut-out size, round	<b>25,3 mm</b>
Cut-out size, metric	<b>M25</b>
Thread	<b>M25 x 1,5</b>
Thread length	<b>14 mm</b>
Clamping range	<b>1 x 5 - 17 mm</b>

### KEL-SCDP-TR 32



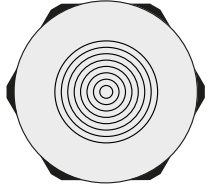
Part No.	<b>44071</b>
EAN	<b>4251269328954</b>
Package quantity	<b>10</b>
For max. no. of cables	<b>1</b>
Max. cable diameter	<b>23 mm</b>
Height	<b>22 mm</b>
Mounting height	<b>8 mm</b>

External diameter	<b>44 mm</b>
Cut-out size, round	<b>32,3 mm</b>
Cut-out size, metric	<b>M32</b>
Thread	<b>M32 x 1,5</b>
Thread length	<b>14 mm</b>
Clamping range	<b>1 x 5 - 23 mm</b>

**KEL-SCDP-TR 40**

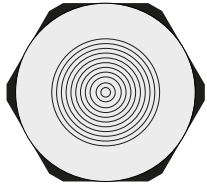
Part No. **44072**  
 EAN **4251269328961**  
 Package quantity **10**  
 For max. no. of cables **1**  
 Max. cable diameter **28 mm**  
 Height **22 mm**  
 Mounting height **8 mm**

External diameter **52 mm**  
 Cut-out size, round **40,4 mm**  
 Cut-out size, metric **M40**  
 Thread **M40 × 1,5**  
 Thread length **14 mm**  
 Clamping range **1 x 8 - 28 mm**

**KEL-SCDP-TR 50**

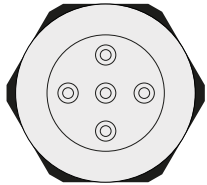
Part No. **44073**  
 EAN **4251269328978**  
 Package quantity **10**  
 For max. no. of cables **1**  
 Max. cable diameter **38 mm**  
 Height **22 mm**  
 Mounting height **8 mm**

External diameter **62 mm**  
 Cut-out size, round **50,4 mm**  
 Cut-out size, metric **M50**  
 Thread **M50 × 1,5**  
 Thread length **14 mm**  
 Clamping range **1 x 8 - 38 mm**

**KEL-SCDP-TR 63|1**

Part No. **44074**  
 EAN **4251269328985**  
 Package quantity **10**  
 For max. no. of cables **1**  
 Max. cable diameter **52 mm**  
 Height **22 mm**  
 Mounting height **8 mm**

External diameter **75 mm**  
 Cut-out size, round **63,4 mm**  
 Cut-out size, metric **M63**  
 Thread **M63 × 1,5**  
 Thread length **14 mm**  
 Clamping range **1 x 8 - 52 mm**

**KEL-SCDP-TR 63|5+1**

Part No. **44078**  
 EAN **4251269328992**  
 Package quantity **10**  
 For max. no. of cables **5**  
 Max. cable diameter **52 mm**  
 Height **22 mm**  
 Mounting height **8 mm**

External diameter **75 mm**  
 Cut-out size, round **63,4 mm**  
 Cut-out size, metric **M63**  
 Thread **M63 × 1,5**  
 Thread length **14 mm**  
 Clamping range **5 x 5 - 13 mm**  
**1 x 50 - 52 mm**